

YOUR GUIDE TO Urban Agriculture

Urban Agriculture Consortium

Designed by ELLIE SHIPMAN

This guide shows six key types of food production or farming that are successfully contributing to a more resilient, healthy, exciting, fair food system in the UK.

Click on the boxes for each type to discover case studies that will inspire and inform you, that show what is possible and the pioneers behind them.

All these examples are changing lives and demonstrate that by overcoming barriers together, we can create a localised food economy that serves people, biodiversity, and the planet.

Industrial agriculture is not resilient or reliable in a changing climate and is responsible for much of today's crises. These examples offer a better kind of food system can happen everywhere: providing jobs, nourishment, community, a reconnection with the land and with our own health, and hope.

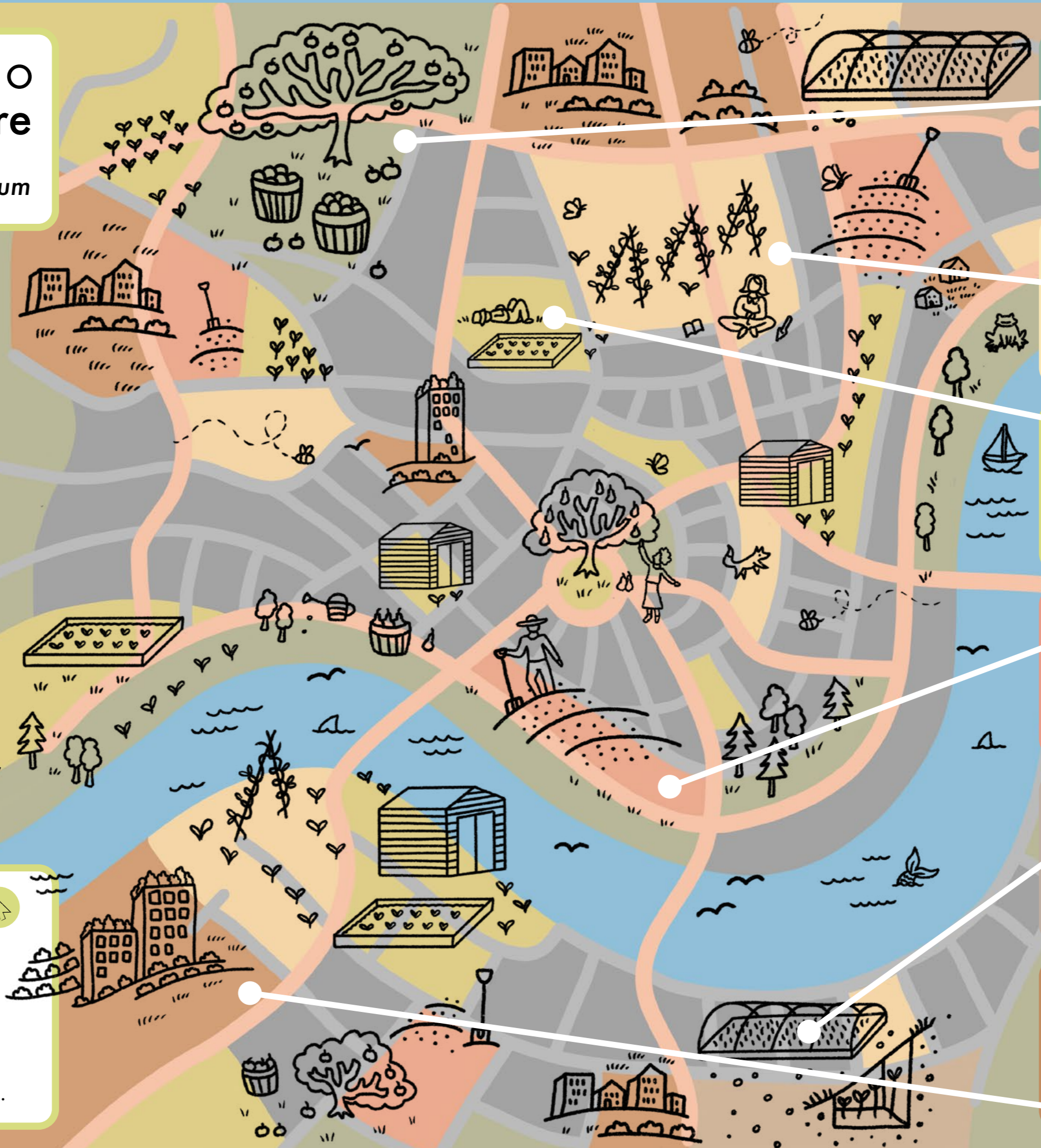
This is a tool for new food producers, councils, funders and community groups, to support thinking, visioning and decision-making.

CLICK ON THE BOXES

to go to the case studies and on the THEMES below to explore the key elements of a thriving food system.

YOUR VISUAL GUIDE TO URBAN AGRICULTURE

We welcome your feedback, ideas and suggestions for future versions of this tool.



TREE-BASED: FOOD FORESTS & ORCHARDS

Regrowing city lungs, diversifying diets, and accessible, beautiful, productive landscape restoration.

PATCHWORK FARMING

A network or ecosystem of food growing sites, services and resources working cooperatively to provide, serve and share local food infrastructure.

COMMUNITY GROWING

Allotments, community gardens and city farms - where urban folk discover and engage with seasonal living food. For education, wellbeing and community resilience.

FARM STARTS AND INCUBATOR HUBS

Land-based hubs for work-based training and mentoring, supporting a new generation of economically resilient urban farmers/growers.

PROTECTED & CONTROLLED ENVIRONMENTS

Urban areas provide unique resources which stimulate creative responses. Affordable, human scale technologies meeting local needs.

PERI-URBAN / FRINGE FARMING

Where urban and rural meet, offering greatest potential for agroecological growing at meaningful scales very close to urban populations.